



Driving Energy Efficiency

 **armacell**[®]

www.armacell.com



ABOUT

As the inventor of flexible foam for equipment insulation and a leading provider of engineered foams, we develop innovative thermal, mechanical and acoustic insulation solutions that create added value for our customers – by driving energy efficiency, enhancing human comfort and contributing to a more sustainable world.

CONTENTS

3

DRIVING ENERGY EFFICIENCY

- 4 FOREWORD
- 5 WHO WE ARE
- 8 DEDICATED EXPERTISE
- 12 ADVANCED TECHNOLOGIES

- 18 PARTNERSHIP
- 29 COMMITTED TO SUSTAINABLE GROWTH
- 31 CONTACTS & CREDITS
- 32 BUILDING TOMORROW

Driving Energy Efficiency

Energy efficiency is an increasingly crucial topic for our planet and all its people.

Since day one, Armacell has been driving energy efficiency through energy-saving solutions for technical equipment. By investing in innovative technology and human expertise, we are fuelling progress in energy efficiency.

FOREWORD



LAURENT MUSY



President & CEO
Armacell Group



DRIVING ENERGY EFFICIENCY

DRIVING ENERGY EFFICIENCY - our new tagline reflects the growing global awareness of the need for more energy-efficient solutions. But since day one, Armacell has been driving energy efficiency through energy-saving solutions for technical equipment. Our investments in innovative insulation technology and human expertise are fuelling advances in energy efficiency, preserving resources and contributing to a more sustainable future.

INNOVATIVENESS IN ACTION

Ever since the invention of ArmaFlex® in 1954, the world's first flexible elastomeric foam for insulating technical equipment, innovativeness has been in our DNA. Our latest innovations have contributed to strengthening our leadership in the technical insulation field. To manufacture ArmaGel® XG, the most recent addition to our highly successful range of proprietary aerogel blankets, we have recently opened an aerogel plant in Pune, India. It doubles our annual blanket-making available capacity to meet the rapidly growing demand for aerogel-based insulation solutions.

Our passive firestop portfolio, acoustic insulation solutions and ArmaPrene™ compound-based elastomeric products are helping to enhance the safety and comfort of building occupants. Our water-based ArmaFlex ECO550 adhesive is an eco-friendlier solution than solvent-based adhesives as it combines safety with ease of application. Another groundbreaking innovation, ArmaPET® Eco50, was the world's first PET-based insulation solution and enables sustainable, energy-efficient building as it is made from recycled plastic bottles that might otherwise pollute rivers, lakes and seas.

SUSTAINABILITY COMMITMENT

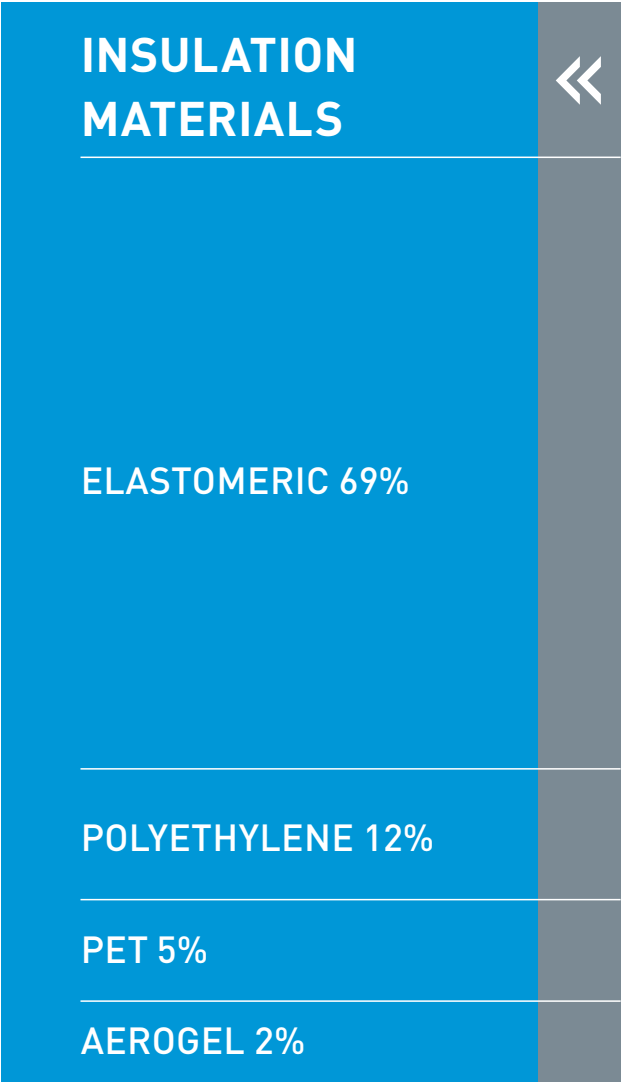
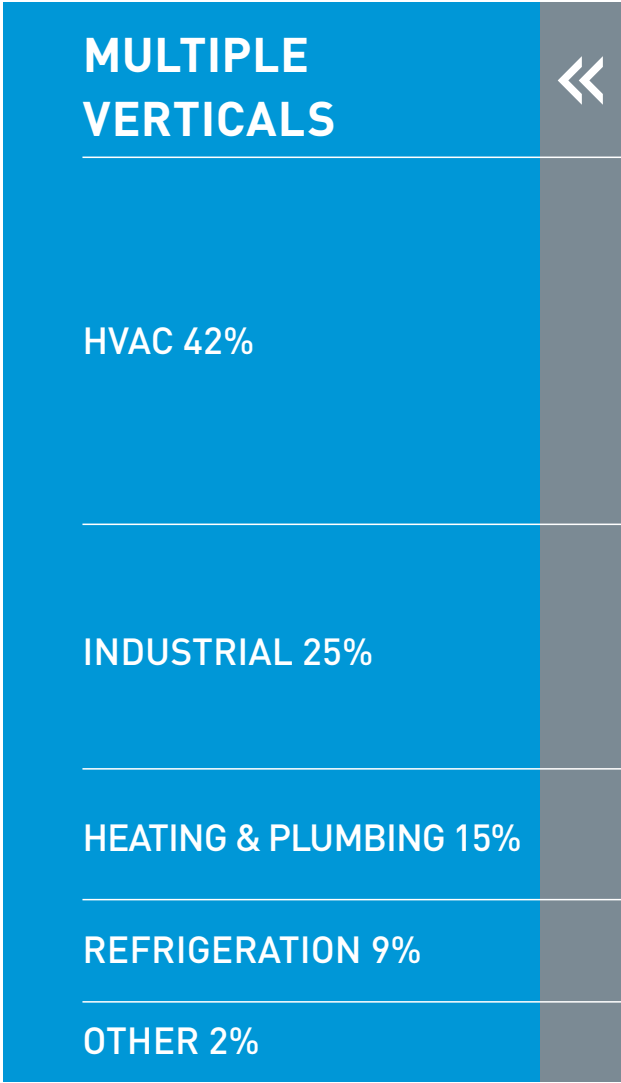
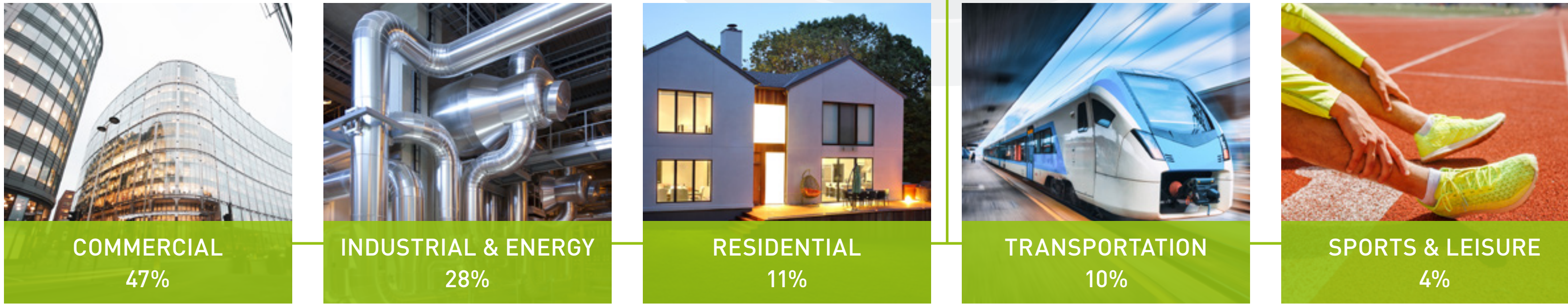
At Armacell, we are committed to leading our industry in sustainability-oriented solutions. That we walk the talk is evidenced by the EcoVadis Gold (top 5%) and Silver (top 15%) ratings awarded to our European plants in Begur, Leini, Münster, Oldham, Środa Śląska and Thimister, where our core advanced insulation and recycled PET products are made. Our commitment to sustainability is further underlined by the priority given to the occupational health and safety of our employees at all our sites.

May I invite you to browse through this brochure and take a closer look at how Armacell is driving energy efficiency? A goal we are achieving by investing in people, production plants and new products – to the benefit of our planet and everyone living on it.

WHO WE ARE

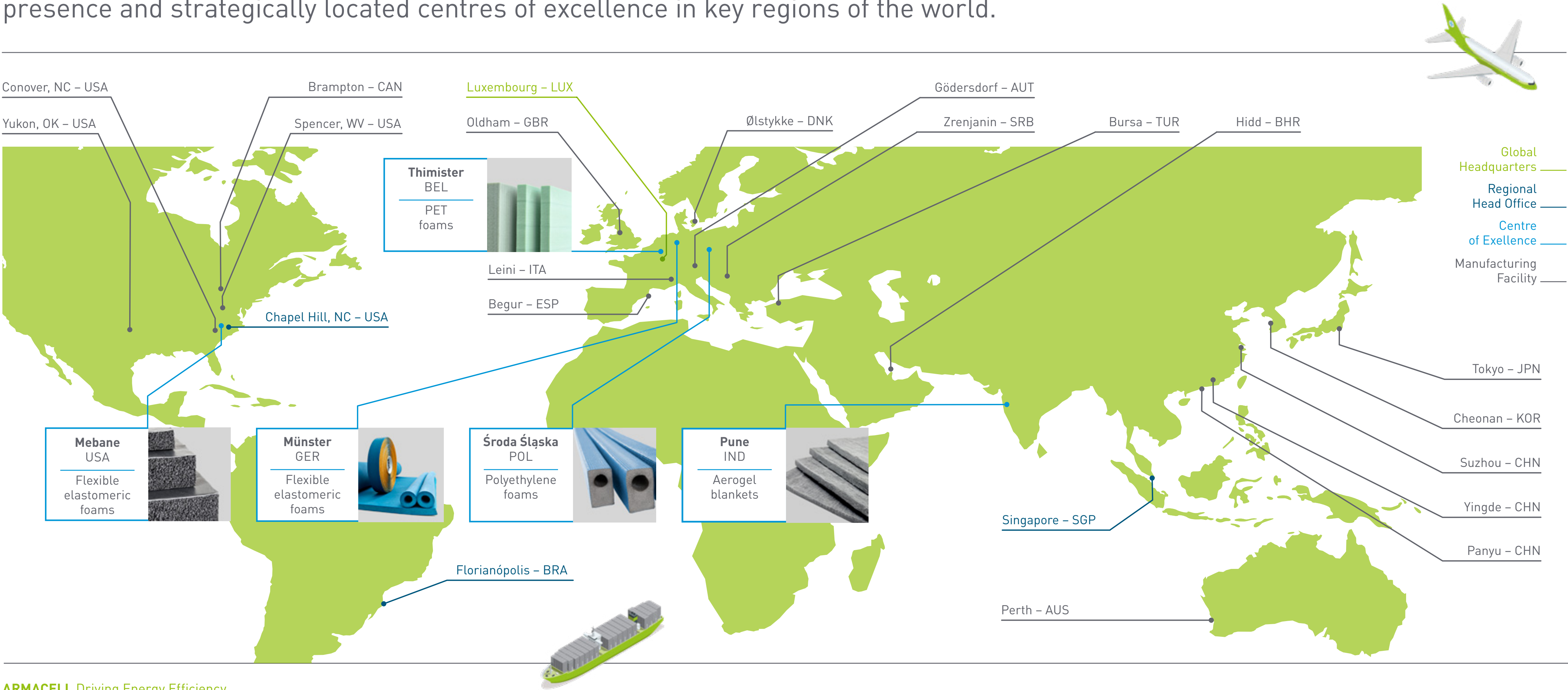


As a multi-material, multi-product company, we strive to drive energy efficiency worldwide. We do this by applying our market-leading expertise and experience to create world-class insulation products and services for technical equipment.



WHERE WE ARE

The close collaboration we cultivate with our customers is made possible through our global presence and strategically located centres of excellence in key regions of the world.



OUR RESPONSE TO GLOBAL CHALLENGES

Energy savings are a key common denominator in the six global megatrends addressed by our products and solutions.



ENERGY EFFICIENCY

As buildings account for nearly 40% of global energy consumption and technical equipment is the second-most significant source of energy losses worldwide, its effective insulation is crucial for reducing energy consumption and mitigating the devastating effects of climate change.

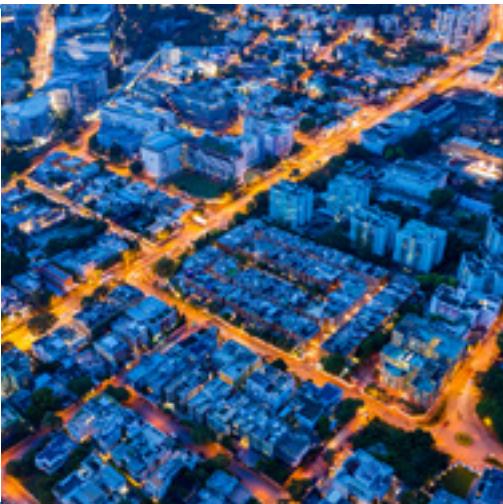


RENEWABLE ENERGIES

By 2026, the low-emission economy will account for 95% of global power capacity growth. But renewables are just as prone to energy losses as fossil fuels are. Effective insulation enhances the efficiency of renewable systems, minimises energy losses and supports sustainable development.

URBANISATION

The urban environment is a critical contributor to global carbon emissions since commercial buildings consume vast amounts of energy. Yet up to 80% of a building’s energy demand could be saved through energy-efficient insulation technologies, which stricter regulations are also demanding.



LIGHTWEIGHTING

A 10% reduction in vehicle weight can result in a 6-8% improvement in fuel economy and thus cut CO₂ emissions. High-performance insulation supports lightweighting in transportation by improving vehicle efficiency and enabling vehicle manufacturers to meet carbon-reduction goals.



ACOUSTIC COMFORT

High-performance noise and vibration-mitigating insulation in buildings and road or rail vehicles enhances their stability and their occupants’ well-being. Quieter workplaces make employees happier and more effective. Less noisy urban environments are simply more healthy.




SUSTAINABILITY

Technical insulation is the unsung hero of urban energy efficiency as it lowers a building’s carbon footprint. Our high-performance insulation innovations are opening up new opportunities as building owners and developers increasingly demand energy-efficient, sustainable solutions.

DEDICATED EXPERTISE



SOPHIE ANCELIN » 

Chief Human Resources
Officer

Only through the dedicated efforts of our global team can we drive energy efficiency and meet customers’ needs.

Day after day, some 3,300 Armacell employees across five continents work for a better future by contributing to a world where our high-performance solutions drive energy efficiency and sustainability. Whether they are involved in R&D, production, technical support or other critical functions, each one of them plays a vital role in creating value for our company.

Our ongoing investment in fostering our employees’ talents and advancing their skills is key to delivering those goals. Together, our collective efforts ensure we stay at the forefront of innovation and make a meaningful global impact.

~3,300
EMPLOYEES
WORLDWIDE

70+
NATIONALITIES

23%
WOMEN
IN THE WORKFORCE

~1,800
PRODUCTION
AND LOGISTICS

~275
SALESFORCE

70+
R&D
PROFESSIONALS

RESPONSIBLE LEADERSHIP

Our multinational executive team of ten highly experienced managers is united in the common purpose of furthering responsible, strategically minded business. Strong leadership provides Armacell with a clear pathway in pursuing sustainable growth, ongoing innovation and solutions that address the challenges of today’s global megatrends.



LAURENT MUSY 
President & CEO



SOPHIE ANCELIN 
Chief Human Resources Officer



WIM VAN ACKER 
Chief Financial Officer



MALTE WITT 
Vice President EMEA



BART JANSSEN 
Vice President Energy & PET



JOHN ROSS TURNER 
Vice President AMERICAS



SCOTT FANG 
Vice President APAC



LIAM DOUGLAS 
Chief Technology Officer



MARC CANGELOSI 
Chief Growth & Sustainability Officer



ADRIAN YEANDLE 
Chief Legal & Compliance Officer





ARMACELL EXPERIENCE



Reasons to work with Armacell – global leader in high-performance insulation materials.

CUSTOMER-FIRST MINDSET

Every day across the globe, more than 275 highly skilled sales and customer service employees strive to create sustainable value for our customers and maintain a close collaboration with them. We develop a co-engineering approach to develop solutions that enhance our customers' business. Armacell stands at your side until the very end of your project.




SOLUTIONS-DRIVEN COMPANY

As a multi-material and multi-product company, we offer an extended product portfolio ranging from thermal insulation and acoustic insulation to passive fire protection and engineered foams. We address the market needs with fit-for-purpose systems and solutions that we co-design with our customers.

INNOVATION LEADER

As the inventor of the market's reference product ArmaFlex® in 1954, we constantly bring innovations to the market, hold +225 patents across 33 patent families, and provide solutions addressing global megatrends.





UNDISPUTED PRODUCT QUALITY

Armacell stands for no compromises on quality and superior performance. We ensure the highest possible quality and safety standards by systematically optimising our processes thanks to our World-class Armacell Mindset (WAM) Programme and hold the most stringent product certifications.

DEDICATED TECHNICAL SUPPORT

Armacell technical experts support our customers everywhere in the world in pre-sales (specification), on-site assistance and training as well as after-sales assistance.



DEEP ENVIRONMENTAL COMMITMENT

We dedicate our business to driving energy efficiency for equipment, we commit to protect the natural environment and move towards a circular economy model. We were the first elastomeric insulation manufacturer to introduce third party-verified Environmental Product Declarations (EPDs).

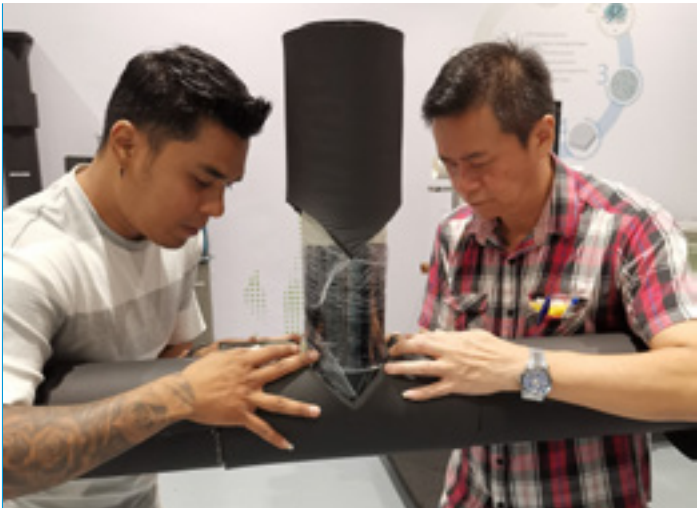
GLOBAL PRESENCE AND NETWORK

We serve more than 100 countries and address local market specificities through more than ~3,300 employees and 26 manufacturing plants.



ROBUST MULTI-DESTINATIONS EXPERTISE

We have multiple references in the healthcare, education, data centre, transportation, energy, industrial, residential and other segments.



STATE-OF-THE-ART TOOLS

Through initiatives such as our insulation calculator ArmaWin™, our installation videos, our webinars or our customer experience and training centre ArmaLive in Singapore, China and India, we support our customers with the best tools to successfully develop their business.



STRONG LOCAL PRESENCE

Multiple national teams ensure the appropriate local focus at your side until the very end of your project.



BEYOND BETTER

Our latest campaign ENERGY EFFICIENCY BEYOND BETTER for commercial and industrial destinations, brings to life how technical insulation can deliver massive energy savings.

To capture and express Armacell’s unique value of excellence, we launched an engaging yet bold communication concept “Beyond Better”. Its creative edge has the potential to add a descriptive phrase before or after the tagline to communicate different key messages, both for external and internal usage.

We’ve launched six campaigns, all of which contained 3D elements, in both mass market and target markets like data centres and specialised healthcare. Customers can learn more about the multi-faceted benefits of our effective technical insulation in three new articles and a white paper available on our website. Integral to this campaign is the promotion of ArmaFlex®, our new ArmaGel® XG range, plus our Energy Assessment and Acoustic Consultancy Services.

PERFORMANCE
BEYOND
BETTER



The Beyond Better concept has been very well received by our stakeholders, both internally and externally as it expresses our Armacell mindset. It differentiates us from our competitors and helps explain the unique value we deliver to our customers.

Marc Cangelosi
Chief Growth & Sustainability Officer



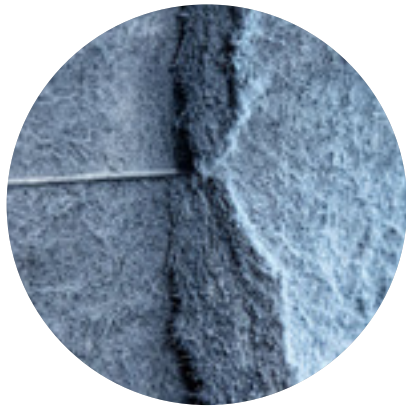


JUSTYNA DOLEGA >> 
Director Global Innovation

Our business is founded on furthering innovative ideas and investing in sustainable technological advances.

Furthering advances in insulation technology is a necessity, not an option, if we are to address pressing global challenges and shape a more sustainable future. So we work to develop innovative solutions that drive energy efficiency and set industry standards.

As customers and stakeholders increasingly prioritise eco-conscious companies, our innovative products will command higher customer loyalty and trust. Moreover, sustainable practices are incentivised by governments and regulators. At the same time, investing in sustainable innovation helps to strengthen our resilience against market and environmental risks.



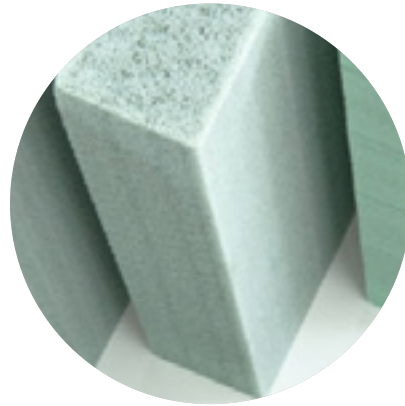
AEROGEL

ArmaGel®, our aerogel-based insulation blanket technology, has opened up new application areas by extending our operational temperature range from -196°C (-321°F) to +650°C (+1200°F). Our latest addition to this range, next-generation ArmaGel XG, has been met with a very favourable market response.



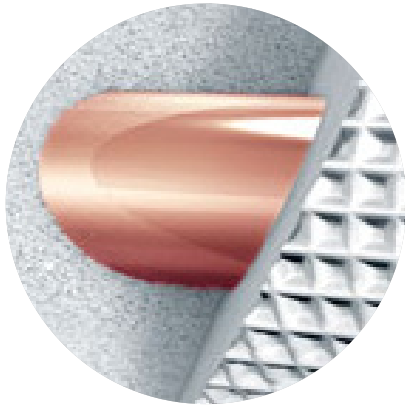
ELASTOMERIC

Since inventing flexible elastomeric foam (FEF) in 1954, Armacell has pioneered the use of ArmaFlex® insulation materials in destinations such as industrial, commercial and transportation. A rigorous patent and trademark management policy protects our extensive FEF portfolio.



PET

Our patented recycled PET technology turns plastic bottles that would otherwise be thrown away into high-value foam materials used in a wide range of applications. ArmaPET® Eco50, a unique PET-based insulation solution, enables sustainable, energy-efficient buildings.



POLYETHYLENE

Our thermal, acoustic and protective polyethylene (PE) products insulate heating, water, wastewater and HVAC systems. Durable, lightweight ArmaComp™ cross-linked PE foams are ideal for industrial, automotive, protective padding, athletic mats and other foam components.

GROUNDBREAKING INNOVATIONS

AEROGEL




The latest extension to our aerogel-based insulation blanket portfolio comes with outstanding intrinsic properties such as very low dust release, a unique lambda performance and excellent non-combustibility. Other features can be tailored to specific applications, including hydrophobicity, cryogenic and cold services, passive fire protection and opacification.

ADHESIVE




As noise impacts quality of life and can impair health, acoustic insulation is extremely important in buildings and a wide variety of industries. Our diverse portfolio includes ArmaComfort™ Barrier P with IMO Part 2 and 5 (DNV-MED B&D) and the Euroclass safety standard, and EN45545-compliant ArmaComfort Reflamex for effective sound transmission reduction in rail vehicles.

ACOUSTIC



In line with our commitment to adopting sustainable manufacturing models and using recycled raw materials, we launched the Eco Polyethylene Foam (ECO PEF) project in Poland to enhance the environmental profile of our ArmaLight™ Tubolit portfolio. The prototype produced contains up to 60% of recycled content and the recycled material is sourced from 100 km away to lower transport-related CO₂ emissions.

ECO PEF



Water-based ArmaFlex® ECO550 adhesive is an easy-to-use, eco-friendlier solution than solvent-based adhesives. The absence of solvents makes for a safer and healthier working environment. ArmaFlex ECO550 needs only a third of the quantity of conventional adhesives while delivering the same high-quality results in bonding almost all ArmaFlex insulation products.

CLADDING



ArmaClad™ Arma-Chek Wrap continues the fine tradition of Armacell’s flexible solutions. Protecting technical insulation from mechanical impact and weathering is now easier and quicker than ever. Simply winding this rainproof, chemical-resistant, self-welding covering material around an insulated pipe delivers the ideal combination of high flexibility and mechanical strength.

REVOLUTIONARY TECHNOLOGY – A FOCUS ON ARMAPRENE™

PATENTED TECHNOLOGY FOR SUPERIOR QUALITY, SAFETY AND SUSTAINABILITY

While conventional elastomeric products containing brominated flame retardants are very effective at inhibiting combustion in fires, they tend to produce high levels of smoke. Our revolutionary, patented ArmaPrene technology resolves this conflict: due to the development of flame-resistant polymers and by using ablative protective additives, it eliminates the need for brominated flame retardants, antimony, and PVC entirely.

SUSTAINABLE SOLUTIONS

Beyond being the easiest, fastest, and most cost-effective way to increase energy efficiency, ArmaPrene-based products meet the most stringent environmental and health criteria set by organisations like LEED®, BREEAM®, DGNB, WELL and others.

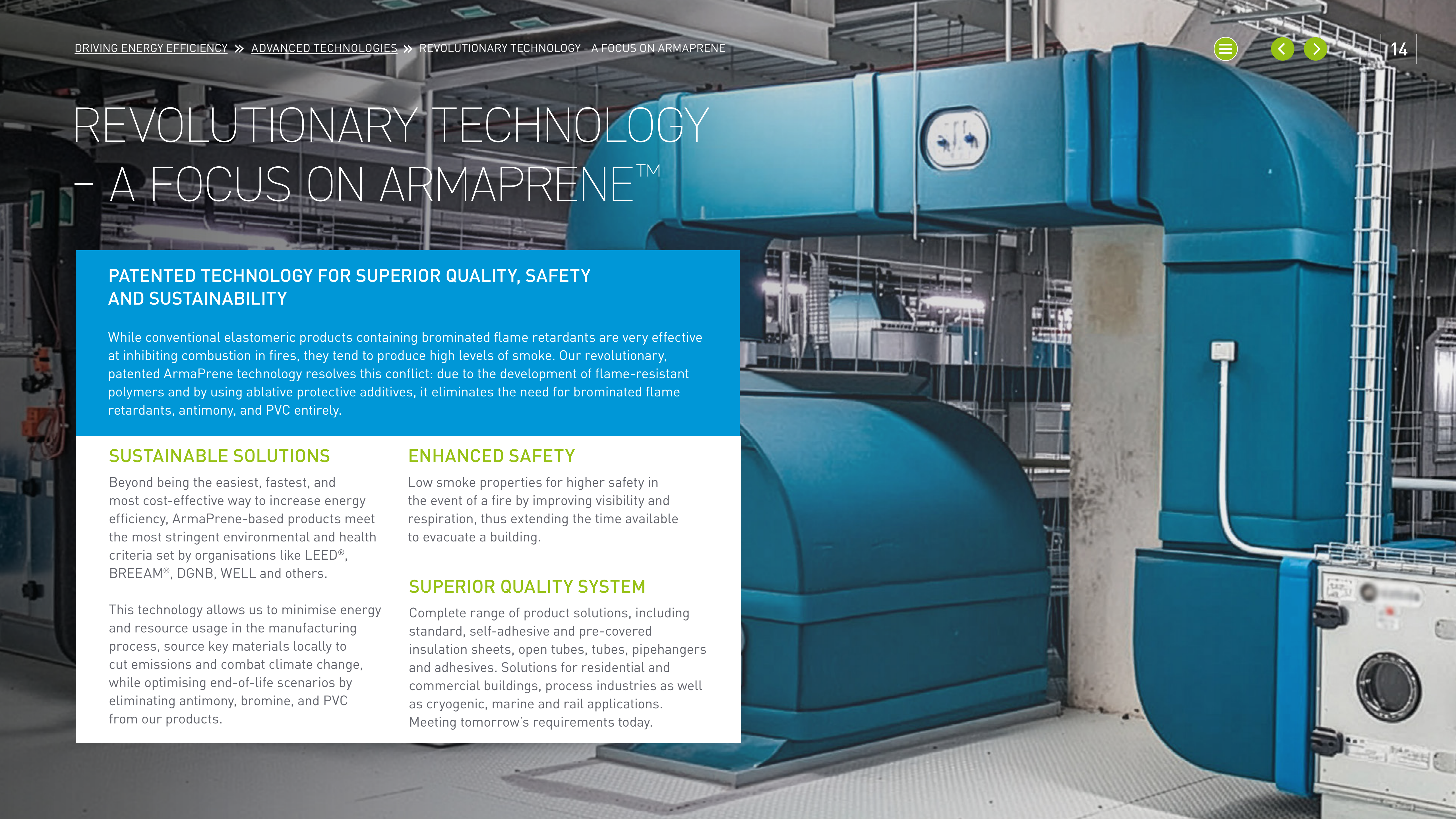
This technology allows us to minimise energy and resource usage in the manufacturing process, source key materials locally to cut emissions and combat climate change, while optimising end-of-life scenarios by eliminating antimony, bromine, and PVC from our products.

ENHANCED SAFETY

Low smoke properties for higher safety in the event of a fire by improving visibility and respiration, thus extending the time available to evacuate a building.

SUPERIOR QUALITY SYSTEM

Complete range of product solutions, including standard, self-adhesive and pre-covered insulation sheets, open tubes, tubes, pipehangers and adhesives. Solutions for residential and commercial buildings, process industries as well as cryogenic, marine and rail applications. Meeting tomorrow's requirements today.



ARMAGEL[®] XG RANGE

Armacell opens new aerogel insulation plant in India to manufacture breakthrough ArmaGel XG product line.

On 11 June 2025, Armacell officially inaugurated its newest manufacturing facility in Pune, India. The exclusive event brought together industry professionals to mark the grand opening with a vibrant celebration, while showcasing its state-of-the-art facility.

This milestone marked a significant expansion of the company's global footprint and a bold step forward in the production of its breakthrough aerogel insulation product line, ArmaGel XG. Our new ArmaGel XG product line is available for high-temperature applications, plus cryogenic and dual-temperature conditions.

Specifically, ArmaGel XGH is engineered for operating temperatures up to +650°C (+1200°F) and is compliant to ASTM C1728 Type III and JIP 33. ArmaGel XGC is ideal for cryogenic and dual-temperature conditions between -196°C (-321°F) and +250°C (+482°F) and is compliant to ASTM C1728 Type I and Type IV. Consequently, our aerogel blanket manufacturing available capacity has doubled to meet the rapidly growing demand for aerogel-based insulation solutions.

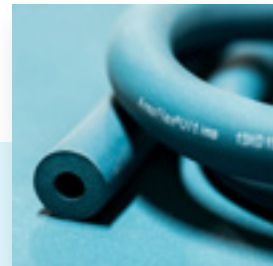


This strategic investment underscores Armacell's strong commitment to innovation, and our goal to provide best-in-class energy efficiency solutions to satisfy our customers' most demanding needs. Our products are designed to reduce energy consumption, extend equipment life, plus facilitate installation and maintenance. Through our investments in innovative technology and human expertise, we are driving progress in sustainable practices and setting new benchmarks in the industry, especially for the Industrial and Energy segments.

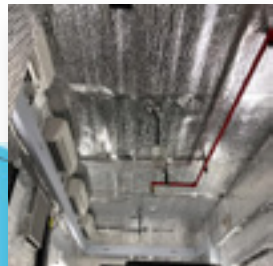
Laurent Musy
President & CEO

AROUND YOU – OFTEN UNSEEN, ALWAYS BEYOND BETTER

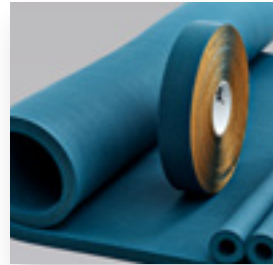
Wherever you are – at home, at work or at play – Armacell technology will be enhancing the comfort and quality of your life. Though rarely visible, it will be delivering beyond better performance and driving energy efficiency.



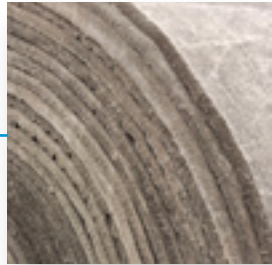
TRANSPORTATION (MARINE)
ArmaFlex® Ultima
Flexible insulation with low smoke emissions for improved fire safety.



COMMERCIAL
ArmaFlex® Pro
Fibre-free insulation for cleaner indoor air quality – essential in mission-critical environments where dust cannot be tolerated.



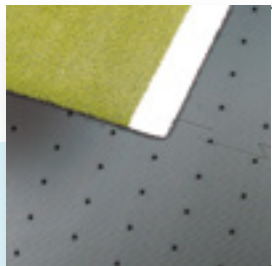
INDUSTRIAL & ENERGY (<100°C/212°F)
ArmaFlex® Ultima
Improved fire-retardant properties and low smoke generation – new safety standard in technical insulation.



INDUSTRIAL & ENERGY (>100°C/212°F)
ArmaGel® XG Aerogels
ArmaGel XGH for high-temperature applications. ArmaGel XGC for cryogenic and dual-temperature applications.



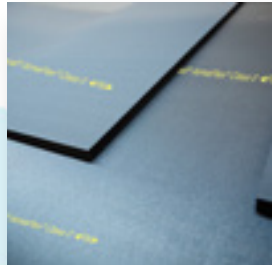
INDUSTRIAL & ENERGY (WIND)
ArmaPET® Struct GRX
Patented rPET foaming technology provides resin uptake savings optimising weight and cost.



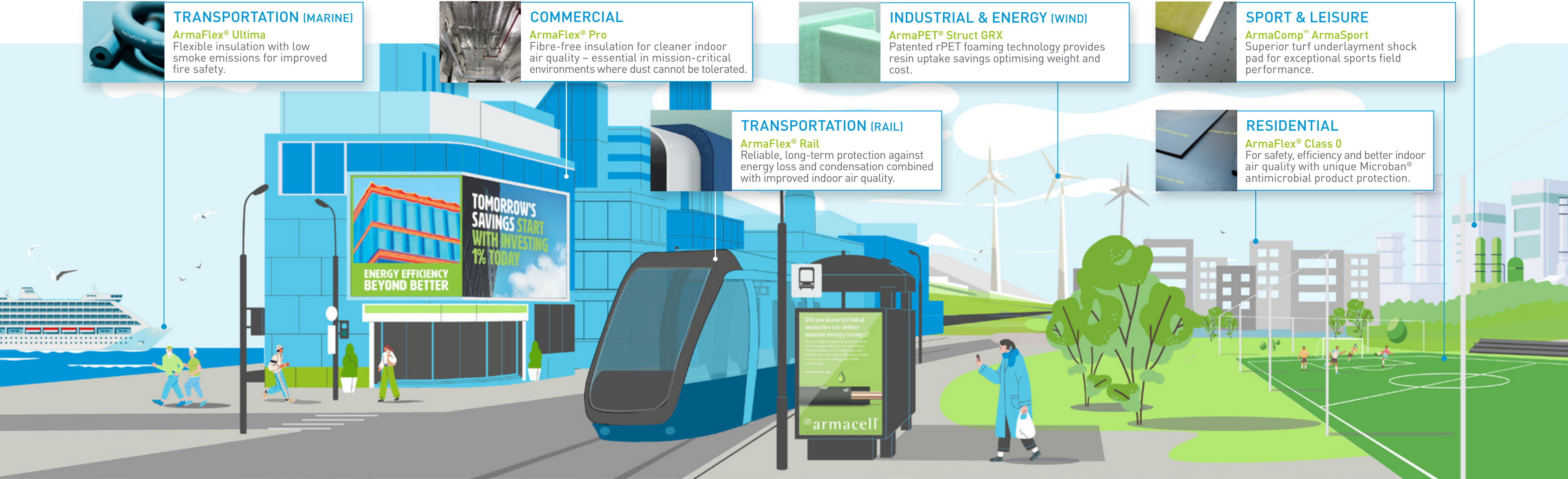
SPORT & LEISURE
ArmaComp™ ArmaSport
Superior turf underlayment shock pad for exceptional sports field performance.



TRANSPORTATION (RAIL)
ArmaFlex® Rail
Reliable, long-term protection against energy loss and condensation combined with improved indoor air quality.



RESIDENTIAL
ArmaFlex® Class 0
For safety, efficiency and better indoor air quality with unique Microban® antimicrobial product protection.





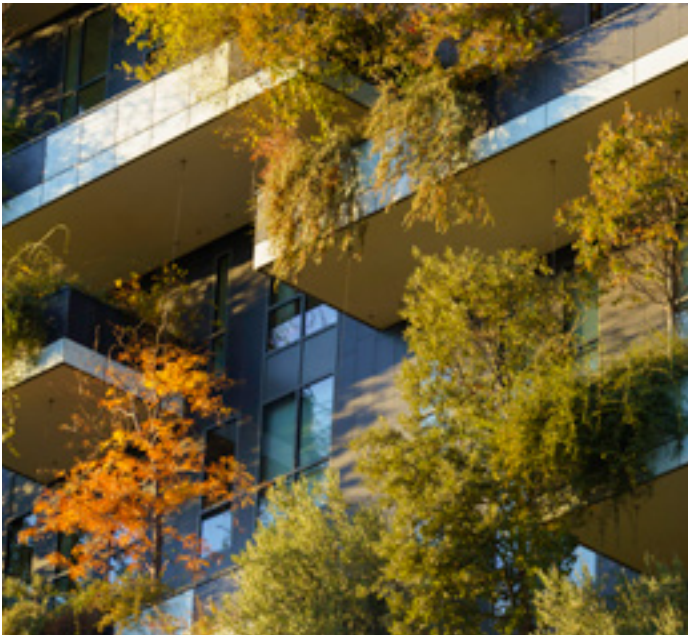
- ArmaFlex®**
Closed-cell insulation materials based on elastomeric foam
- ArmaClad™**
Cladding solutions
- ArmaComfort™**
Insulation products for sound attenuation
- ArmaComp™**
Component foams
- ArmaFix™**
Mounting and fixing solutions
- ArmaGel®**
Products based on aerogel technology
- ArmaLight™**
Polyethylene-based materials
- ArmaPET®**
PET-based foams
- ArmaProtect™**
Passive firestop solutions
- ArmaSound®**
Industrial acoustic solutions (incl. energy)
- Heat Networks**
Pre-insulated pipes for energy-efficient heat networks

Our high-quality insulation products are used in a diverse range of destinations worldwide. In recent years, our equipment insulation products for commercial, industrial and energy facilities have performed particularly well.



COMMERCIAL

Efficient insulation of HVAC, hot and cold water, heating, plumbing and refrigeration systems in hotels, airports, hospitals, data centres, retail outlets, public buildings and the like is what our commercial equipment portfolio delivers. These products comply with fire safety, environmental and green building regulations, drive energy efficiency, cut CO₂ emissions and also address construction-related acoustic and vibration issues.



RESIDENTIAL

We offer insulation for heating, plumbing, HVAC, hot and cold water, and sound attenuation and vibration control products that make life more pleasant in residential buildings. Through insulating solar and heat pumps we are meeting the growing consumer demand for green energy.

TRANSPORTATION

Driving energy-efficient mobility in trains, ships, cars and trucks matters for the future of our planet. We contribute to this goal by providing thermal and acoustic insulation products to enable lightweight, low-noise and safe passenger transportation in many kinds of vehicles.



INDUSTRIAL & ENERGY

Our long-lasting thermal and acoustic insulation products are driving energy efficiency, preventing heat loss and lowering noise levels in industries such as manufacturing, food and beverages, pharmaceuticals and power generation. Our passive fire protection solutions cover another critical field in industrial and energy facilities. And as renewable energies increasingly replace gas-powered heating, pre-insulated pipes are a key precondition for energy-efficient heat networks.

SPORTS & LEISURE

In multiple sports or leisure facilities around the world, our impact-cushioning, shock-absorbing products make people's lives safer. On synthetic turf pitches, for example, the quality of the underlay is a key comfort and safety factor for all the players.



PARTNERSHIP



MARC CANGELOSI >> 
Chief Growth & Sustainability Officer

Our system solutions are the outcome of co-engineering based on close collaboration with customers.

Tailored to the needs of a wide variety of industries, our system solutions and the expert support we provide are based on decades of experience in the equipment insulation field. Our consultancy and training services for trade partners include digital learning platforms and hands-on seminars.

As green building schemes help lower CO₂ emissions from commercial buildings and are critical in addressing pressing climate challenges, we support building owners, architects, specifiers and contractors in obtaining green building certifications such as BREEAM®, LEED® and The WELL Building Standard®.



ENABLING CERTIFIED GREEN BUILDINGS

Green building focuses on designing and constructing commercial blocks, industrial facilities and housing to heighten the occupants' well-being while enhancing energy efficiency, lowering carbon emissions and minimising environmental impact. International green building schemes such as LEED®, BREEAM®, the WELL Building Standard®, GREENGUARD Gold and Germany's DGNB play a crucial role in shaping, assessing and certifying sustainable building practices.



Buildings worldwide account for up to 40% of global energy consumption.

This statistic shows how critical it is to construct green buildings. Yet in recent years, little progress has been made towards meeting the building sector's decarbonisation targets. Up to 80% of a building's energy requirement could be saved by incorporating existing energy-efficient technologies. Of these, technical insulation is a most cost-effective and impactful way of cutting CO₂ emissions and is, without a doubt, the unsung hero of energy efficiency in commercial, industrial and residential buildings.

Armacell supports designers, architects, consultants and developers in meeting the certification requirements of green building schemes by providing Environmental Product Declarations (EPDs) for its core products. These compliance documents confirm that the raw materials are responsibly sourced and manufacturing designs align with the ISO 14001 environmental management standard.



GREEN BUILDINGS IN PRACTICE

TOWER TEN – WTC AMSTERDAM, NETHERLANDS



Located in the heart of Amsterdam’s Zuidas district, Tower Ten is the latest sustainable addition to the World Trade Center in the Netherlands. Completed in 2024, the 52,000 m² office complex integrates green roofs, recycled materials and 20,000 m² of reused concrete. ArmaFlex® insulation was applied to the extensive network of chilled water and cooling pipework to ensure the best possible thermal performance, long-term energy efficiency and condensation control. Tower Ten sets a new benchmark for eco-conscious urban development in the Netherlands.

PRODUCT: ARMAFLEX
CONTRACTOR: RIWELTIE ISOLATIE EN BRANDPREVENTIE BV, UTRECHT

CERTIFICATES: BREEAM® NEW CONSTRUCTION – EXCELLENT
WELL BUILDING STANDARD® – GOLD

ASHRAE HQ – PEACHTREE CORNERS, GA - USA



ASHRAE, a global society of over 50,000 HVAC professionals across 132 countries, champions sustainable building innovation. For its new Global Headquarters, a 100% net-zero energy facility built to the International Green Building Code, ASHRAE prioritised superior indoor environmental quality and HVAC system performance. As a trusted industry partner, Armacell supplied ArmaFlex insulation, ArmaFlex Insulation Tape, ArmaFlex WB Finish and ArmaFlex 520 BLV adhesive to support the building’s sustainability goals and ensure long-term energy efficiency.

PRODUCT: ARMAFLEX
CONTRACTOR: SHUMATE MECHANICAL

CERTIFICATES: NET-ZERO ENERGY (NZE) BUILDING

JOLLIBEE TOWER – PASIG, PHILIPPINES



Jollibee Tower, a 41-storey Grade A development in Metro Manila’s Ortigas Central Business District, offers over 55,000 m² of premium office and commercial space. Designed with sustainability in mind, the Tower features energy-efficient double-glazed curtain walls and green building technologies. In line with the developer’s core values in promoting sustainable development through green technology, Armacell supported the project by insulating 99,600 m² of central HVAC piping with ArmaFlex Class 0 and thus enhanced the Tower’s thermal efficiency and long-term environmental performance.

PRODUCT: ARMAFLEX CLASS 0
CONTRACTOR: ELITE AIR CLIMATE CONTROL INC.

CERTIFICATES: LEED® GOLD

ENHANCE SUSTAINABLE ON-WATER EXPERIENCES

ADVANCING THE FUTURE OF YACHTING THROUGH INNOVATION

Gulf Craft continues to drive the future of yacht manufacturing through a strategic focus on innovation, operational excellence, and sustainable practices. Backed by four decades of expertise, the company integrates advanced technologies and continuous investment into its production processes to deliver high-performance vessels of exceptional quality.

The Majesty 60 Yacht, developed in partnership with Armacell, earned the “Best Evolution Award” at the 2024 World Yachts Trophies during the Cannes Yachting Festival, recognising its forward-thinking design and engineering. Additionally, the integration of ArmaPET® Struct GRX contributed to a measurable reduction of 23.48 tonnes in CO₂ emissions, reflecting Gulf Craft’s ongoing commitment to environmental responsibility.

-23.48
TONNES
CO₂ EMISSIONS



A WINNING FIELD



UNDERNEATH THE SURFACE

The University of Maryland’s field hockey programme has become known for a tradition of excellence achieving records of seven NCAA championships and 13 conference season championships – solidifying the Terrapins’ position among the top teams in the nation. The facility, which the field hockey team shares with the school’s women’s lacrosse programme, has a seating capacity of 2,000 and meets the highest field standards of the Federation of International Hockey. The playing area of the field hockey pitch is approximately 300 feet in length by 180 feet wide. For safety and performance, the success of a synthetic field

starts under the turf. Armacell’s turf underlayment shock pad, ArmaComp™ ArmaSport TU2, achieved that goal creating a winning field for their champions.

ArmaSport® pads are made of closed-cell foam manufactured in several thicknesses to meet the strictest specifications. Supplied in rolls, the long lengths and turf-carpet widths make installation fast and easy. Produced with an antimicrobial to protect against fungi, mould and bacteria, plus formaldehyde free, it’s the best turf and underlayment padding for superior playability.

7,000 m²

ARMASPORT TU2
UNDERLAYMENT
SHOCK PAD



SETTING NEW STANDARDS IN DRIVING ENERGY EFFICIENCY

GREENERGY
DATA CENTER
TALLINN, ESTONIA

INSULATION MINIMISES ENERGY LOSSES AT ESTONIAN DATA CENTRE

With 100% of government services online and 99% of the population having an electronic ID, Estonia is the world’s most highly developed digital society. But this benchmark for digital innovation is only possible thanks to reliable, secure and sustainable data centres such as the Greenergy Data Center in Tallinn.

With its multiple protection layers and redundant systems the Greenergy Data Center is recognised as the most reliable, sustainable and secure data centre in the Baltics. It is also the first data centre in the region to be certified under the stringent European standard EN 50600. Greenergy’s exceptional reliability and minimised environmental impact are achieved through the

exclusive use of renewable energy and an optimised cooling performance. As the insulation solution for the data centre’s technical equipment, ArmaFlex® Ultima plays a crucial role by minimising energy losses from cooling equipment, lowering operating costs, safeguarding against condensation and corrosion, and avoiding room air contamination.

Fires are one of the main causes of prolonged downtimes in data centres and ArmaFlex Ultima’s patented ArmaPrene™ technology – the first flexible insulation material to achieve B_L-s1,d0 classification – makes a key contribution to the data centre’s fire safety concept by significantly lowering smoke generation in the event of fire.

*ArmaFlex Ultima
outperforms standard
elastomeric insulation
materials, exhibiting
10 times less smoke.*

B_L-s1,d0

HIGHEST
FIRE SAFETY CLASS
FOR ORGANIC MATERIALS

1.2 PUE

POWER USAGE
EFFECTIVENESS (PUE)



INSULATING CHINA'S LARGEST REFINERY

THE SHENGHONG
REFINING & CHEMICAL
INTEGRATION REFINERY
LIANYUNGANG, CHINA



ULTRA-TIGHT INSTALLATION DEADLINE SUCCESSFULLY MET

The Shenghong Refining & Chemical Integration refinery located in Lianyungang on China's Yellow Sea coastline has an annual processing capacity of 16 million tonnes for refining oil, 1.1 million tonnes for ethylene production and 2.8 million tonnes for aromatics production - and required a turnkey solution for insulating the cold pipes on the pipe racks.

An extremely tight deadline of 40 days for completion of the installation work was the challenge Armacell committed to – and successfully met. During the installation work, three of our energy team

members were permanently on site to train and manage the 500+ installers. In all, 14,826 m³ of ArmaFlex® LT and ArmaFlex LTD products were installed and no less than 19,296 tins of our ArmaFlex 520 adhesive were used.

The successful completion of this installation project confirmed our ability as a turnkey-solution provider that is capable of meeting ultra-tight deadlines. The outcome was that the customer awarded Armacell the contract for phase 2 of the refinery project.



14,826 m³
OF ARMAFLEX LT
AND ARMAFLEX LTD
INSTALLED

19,296 tins
OF ARMAFLEX 520
ADHESIVE USED



U.S. SOYBEAN CRUSH PLANT GOES FOR ARMAGEL®

SOYBEAN
CRUSH PLANT
CHERRYVALE, KANSAS

ARMACELL PRODUCT IDEAL FOR HIGH-TEMPERATURE APPLICATIONS

Soybeans are the protein-rich staple in the diets of many millions of people and animals all over the world. After soybeans are harvested, one of the first steps in their processing is crushing.

One of the leading U.S. soybean processors was planning to build a new crush plant and needed an insulation solution for the high-temperature process piping, vessels and tank systems. Although the company's engineers had previously chosen mineral wool as their pipe insulation solution, this time round they decided to go for an aerogel solution because of its superior performance. So they started looking for a supplier with the right product, available supplies and a secure distribution chain.

The aerogel product the company chose was ArmaGel HT, an aerogel blanket technology suitable for temperatures of up to +650°C (+1200°F) and offering up to five times better thermal performance than competing products. Besides, ArmaGel HT is hydrophobic (thus mitigating the risk of corrosion under insulation), environmentally safe, ultra-thin, lightweight and flexible, as well as cutting easily to conform to preferred shapes with less waste. That ArmaGel HT is available in 5, 10, 15 and 20 mm thicknesses was an advantage other competitors could not offer. After delivery of the insulation material, Armacell provided hands-on application training for the insulation installers. As a result, our customer was very happy with the insulation solution itself and delighted with the dedicated support provided afterwards.

+650°C (+1200°F)

ARMAGEL HT IDEAL
FOR HIGH-TEMPERATURE
APPLICATIONS

5, 10, 15, 20 mm

MORE THICKNESS OPTIONS
WITH ARMAGEL HT

360° CUSTOMER SUPPORT

At Armacell we go the extra mile to deliver added-value services and solutions – and ensure information about them is available 24/7. That's why we do all we can to maintain open lines of communication with our customers.

At every stage from order to delivery we provide digital information flows to ensure you're always in the picture. And in everything from on-site training sessions and webinars on project planning and safety to our dedicated local sales and customer service teams, our local experts work closely with you to achieve more together.

SERVICES YOU CAN BENEFIT FROM

Our know-how is based on decades of experience in the flexible insulation market and the multi-disciplined expertise of our highly qualified global workforce. It finds its expression in the broad portfolio of products, services and system solutions we offer in a wide range of fields. We apply this expertise to deliver added-value to our customers and end-users all over the world.

THE SERVICES WE OFFER INCLUDE:

- » **Installation training:** Our commitment to providing high-performing insulation technology goes beyond high-quality materials to include sharing our decades of expertise on the correct installation of our insulation systems. Our training programmes will equip you with the necessary expertise to install our solutions reliably, safely and quickly.
- » **Energy assessments:** Available in many markets as an on-site service performed by our technical experts, an energy assessment is an effective way of measuring energy losses across your facility and determining the right course of action to improve your energy efficiency, productivity and process stability.
- » **Acoustic consultancy service:** From initial design to project completion, our comprehensive acoustic consultancy service provides acoustic measurements, modelling and advice in many markets – and thus ensures we can offer you effective noise control solutions.

For more details of our comprehensive service spectrum, please visit our website www.armacell.com and click on **resources**.



ARMALIVE

OUR NEW CUSTOMER EXPERIENCE AND TRAINING CENTRES

Our solutions, often hidden behind ceilings and walls or integrated seamlessly into interior designs, are frequently overlooked despite their substantial benefits, including energy savings, acoustic comfort, and fire protection.

ArmaLive encompasses pioneering facilities designed to demonstrate the practical application and performance of our solutions. Visitors can observe the installation and real-life usage of our high-performance insulation materials and compare them with alternative materials. Plus, our training programmes, led by expert product and application trainers, enhance awareness about insulation and energy efficiency, and professionalise insulation installation skills.

People seeking to deepen their expertise can join us at one of our ArmaLive Experience Centre's around the world, including Singapore, China, and Mumbai and Pune in India.

*ArmaLive is an embodiment
of our commitment to drive sustainability
and energy efficiency and uplift the industry
with skilled professionals.*



MUCH APPRECIATED

EUROPE, MIDDLE EAST AND AFRICA

Air Liquide



Partnering with Armacell allowed us to achieve a uniform insulation system across all our cryogenic plants, marking a significant step forward in our commitment to operational excellence and sustainability.

Ivan Sanchez Molinero,
IM Engineering Head - EIM - Central Europe Cluster

AMERICAS

United Refrigeration



I've been in the industry for 40+ years and done business with Armacell all of these years. Their reputation for having a quality product, robust inventory and an experienced and customer-friendly sales team has been the reason I've preferred to sell the Armacell brand.

Fina Vicari
Regional Sales Manager

ASIA PACIFIC

Pfizer



The Armacell training improved my team's overall knowledge and capabilities. It positively contributed to the progress and success of my project. Pfizer requires good quality workmanship from all its contractors and has a strict inspection policy before accepting handover of work.

Donal Arnott
Project Manager



COMMITTED TO SUSTAINABLE GROWTH

Sustainability drives our mindset, innovative spirit and business partnerships as we work to minimise the environmental impact of our operations and create lasting value for customers and end-users. By driving energy efficiency we are contributing to a more sustainable future for us all.

PROTECTING THE PLANET

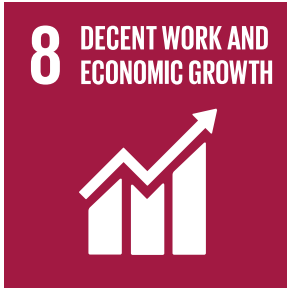
- » **Sustainable innovation:** Developing high-performance insulation solutions to drive energy efficiency.
- » **Climate action:** Supporting customers in cutting their energy consumption and thus reducing their CO₂ emissions.
- » **Circularity and resource conservation:** Incorporating recycled materials and optimising waste management.
- » **Carbon reduction:** Lowering Scope 1, 2 and 3 emissions through sustainable sourcing, production efficiencies and innovative ideas.

INVESTING IN PEOPLE

- » **Health and safety:** Implementing our core values through effective measures and enhancing employee safety.
- » **Professional development:** Investing in job-related training, skills' enhancement and career enablement.
- » **Employee engagement:** Understanding employee experiences, encouraging interaction and fostering equal opportunities.
- » **Safe and durable products:** Creating sustainable value and long-lasting solutions to serve a diverse global customer base and safeguard our employees' jobs.

ENABLING GOOD GOVERNANCE

- » **Corporate responsibility:** Upholding human rights, environmental standards and data protection through rules, policies and processes.
- » **Responsible business conduct:** Ensuring regulatory compliance, ethical behaviour and integrity in all operations.
- » **Sustainable procurement:** Aligning with suppliers to ensure the highest environmental and social standards are met.
- » **Stakeholder engagement:** Collaborating with customers, investors and other stakeholders for responsible sustainability impact.



SAFE WORKPLACES

Decent jobs are safe jobs. Our Health and Safety Policy and promotion of a zero-accident mindset are aimed at ensuring employees go home from work safe and healthy.



DRIVING ENERGY EFFICIENCY

By enhancing energy efficiency and helping to lower CO₂ emissions in a wide range of industries, our products enable a more effective global response to climate change.



INNOVATIVE TECHNOLOGY

The innovative products and solutions we develop and market drive energy efficiency and enable lightweighting solutions in the automotive, rail and wind power industries.



REDUCING PLASTIC POLLUTION

Plastic waste is polluting waters worldwide. Our PET foams are made from recycled plastic bottles that may otherwise have ended up in lakes, rivers and seas.



PRESERVING RESOURCES

We use resources responsibly, manufacture efficiently and are committed to delivering sustainable value through long-lasting, low-impact products and solutions.



WE SUPPORT
Since 2006, we have been supporting the United Nations Global Compact (UNGC) initiative and aligning our strategies and operations to its Ten Principles to meet our fundamental responsibilities in the human rights, labour, environment and anti-corruption fields.

BEYOND COMPLIANCE

Customers benefit from our commitment to going beyond compliance.

ECOVADIS HONOURS

All six plants producing our core advanced insulation and PET products in **Belgium, Germany, Italy, Poland, Spain and the UK** were awarded EcoVadis Gold (top 5%) or Silver (top 15%) medals in 2024. The globally recognised EcoVadis sustainability ratings cover four key areas:

- » **Environment:** Managing environmental impact
- » **Labour and Human Rights:** Supporting fair and safe working conditions
- » **Ethics:** Ensuring ethical and transparent business practices
- » **Sustainable Procurement:** Sourcing materials responsibly

The Gold and Silver medals our plants earned underscore our dedication to upholding the highest standards in environmental, social and governance practices across our European and global operations. They also strengthen our reputation as a trusted partner in a dynamically evolving world where responsible business practices and sustainable supply chains enjoy a higher priority than ever before.

LOOKING AHEAD

While celebrating these achievements, we remain determined to strengthen our impact on environmental, social and governance (ESG) topics. Our goals include expanding our sustainability initiatives, refining and aligning our ESG reporting, and deepening our collaboration with customers and business partners.



CONTACTS & CREDITS

PUBLISHER & CONTACT

Armacell International S.A.

89C, rue Pafebruch
L-8308 Capellen
Grand Duchy of Luxembourg
www.armacell.com

Concept and design

FlyPR Sp. z o.o.
Plac Solny 15
50-062 Wrocław
Poland
www.flypr.pl

Copyright

© Armacell, 2025.
All rights reserved.
Trademarks followed
by ® or TM
are trademarks
of the Armacell Group.

Photography

Armacell
Michael Pfeiffer
Greg Bugni
Frank Springer
Greenergy Data Centers /
Tõnu Tunnel
Thomas Gasparini



Front page: Hong Kong, SAR China Photo credit: d3sign (Getty Images)

Envato Elements (ADDICTIVE_STOCK,
Mint_Images, macniak, den-belitsky,
kolesnikovsergii, Abert84, leungchopan, Fahroni,
biletskiy, Good-Studio, Sensvector, kit8, BNIMIT,
liufuyu, clodio, Bluesandisland, siwabudv,
jacoblund, wirestock)

Adobe Stock (diesirae, orbcatt, vectorplus,
Golden Sikorka, frank peters, Gorodenkoff,
deberarr, Ingo Menhard)

iStock (ASKA, Nostal6ie, madphane,
Bevan Goldswain, cg-art, dusanpetkovic)

Getty Images (d3sign, Yuichiro Chino)

At Armacell, your trust means everything to us, so we want to let you know your rights and make it easier for you to understand what information we collect and why we collect it. If you would like to find out about our processing of your data, please visit our Data Protection Policy. USGBC® and the related logo are trademarks owned by the U.S. Green Building Council® is used herein with permission. LEED® stands for Leadership in Energy and Environmental Design™. LEED®, and its related logo, is a trademark owned by the U.S. Green Building Council® is used herein with permission. BREEAM® stands for Building Research Establishment Environmental Assessment Method and is the world’s leading science-based suite of validation and certification systems for a sustainable built environment. BREEAM is a registered trademark of BRE (the Building Research Establishment Ltd. Community Trade Mark E5778551). The WELL Building Standard® is a performance-based system for measuring, certifying and monitoring features of the built environment that impact human health and well-being. The WELL Building Standard, and its related logo, is a trademark of International WELL Building Institute pbc in the United States and other countries. Microban® is a trademark of Microban Products Company and is used herein with permission.

Building Tomorrow

Moving forward, we continue to explore new ways of harmonising the global impact of our products with their relevance for people. Our vision is a world where no energy is wasted and every solution we create contributes to a sustainable future – for everyone everywhere.

Around The Globe, Around You