

INSTALL IT. TRUST IT.

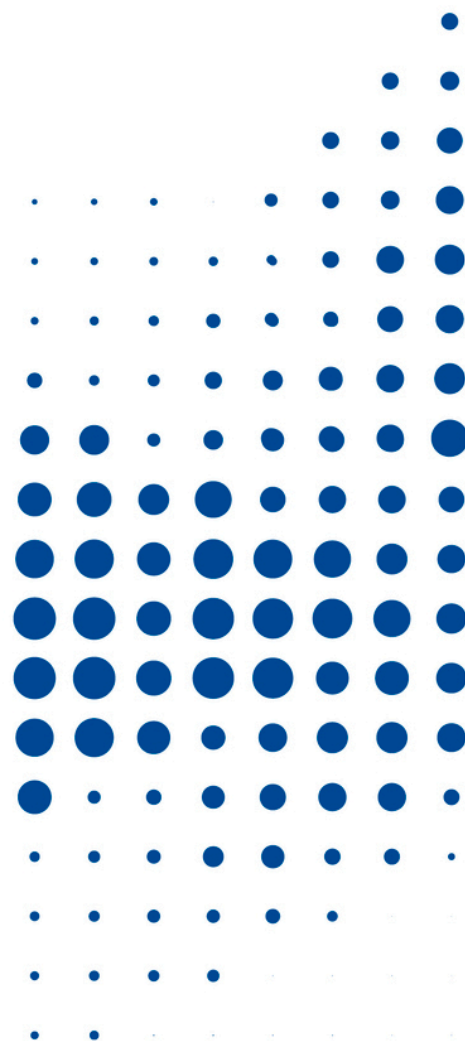
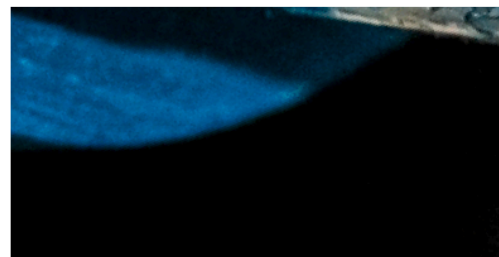
ArmaFlex

Ultima 700 adhesive

Specially formulated adhesive for uniform and safe seam bonding of ArmaFlex Ultima and insulating materials based on ArmaPrene synthetic rubbers

// One-component adhesive

www.armacell.com



 **armacell**[®]
ArmaFlex[®]

TECHNICAL DATA - ARMAFLEX ULTIMA 700 ADHESIVE

Brief description	Special premium one-component adhesive for processing ArmaFlex Ultima and insulating materials based on ArmaPrene synthetic rubber materials. See also "Overview ArmaFlex Adhesives".
Material type	Contact adhesive on polychloroprene basis, free of aromatic solvents.
Additional material information	Liquid
Product colour range	Teal
Special features	Specially formulated adhesive for uniform and safe seam bonding of ArmaFlex Ultima and insulating materials based on ArmaPrene synthetic rubbers.
Applications	Work should not be carried out on plants in operation or areas exposed to strong sunlight. Stir the adhesive with a brush well before use. Apply thinly with a brush or spatula to the areas to be bonded. In case of contact adhesion press together with force during the contact adhesion time. For further details see extensive ArmaFlex Application Manual.
Installation	Clean dirty surfaces and the ArmaFlex surface with ArmaFlex Cleaner before starting the application with the adhesive. Compatibility with bases: very good adhesion to metallic base. The compatibility with colour-coated surfaces with adhesive needs to be tested. Incompatible with: Asphalt, bitumen or red lead paint (inseed oil based).
Remarks	Setting time of the adhesive is 36 hours. Only then should the plant be put into operation. Wait 36 hours before applying coatings (exception: Armafinish 99), adhesive tape, coverings etc.

Property	Value / Assessment		Standard / Test method
Temperature range			
Service temperature	Min. °C ¹	Max. °C	
	-50	110	
Weather and UV resistance			
Weather resistance	Very good		
Health and environment			
Volatile organic compounds (VOC) content	Fulfills all VOC requirements (French, Italian, Belgian, German AgBB, EMI CODE and Eurofins Indoor air Comfort GOLD).		ISO 16000 Parts 3, 6 & 9
Health aspects	MSDS available on request.		
Green building assessment	Meets the sustainable construction requirements for BREEAM international and DGNB.		
Other technical features			
Application conditions	Application temperature: ideally between + 15 °C and + 20 °C, not below 0 °C. At temperatures below + 5 °C or high relative humidity (above approx. 80%), increased condensation may form on the surfaces of the glued or adhesive films. In these cases, bonding is difficult or impossible. This can be tested using absorbent paper (blotting or crepe paper).		
Disposal and recycling	Allocation of a waste code number, according to the European Waste Catalogue, should be carried out in agreement with the regional waste disposal company. Residuals must be removed from packaging and when emptied completely disposed of in accordance with the regulations for waste removal. Incompletely emptied packaging must be disposed of in the form of disposal specified by the regional disposer. More details see relevant Safety Data Sheet.		
Explosion limits	Lower: 1,0 Vol. % Upper: 12,8 Vol. %		
Flash point	approx. - 26 °C		
Hazard class	Highly flammable liquid and vapour		
Shelf life	18 months		
Solids content	approx. 18 %		
Storage	Material shall be stored in a closed (unopened) container in a dry, cool and well-ventilated place. Do not store together with: explosive substances; spontaneously combusting substances. Jellification due to frost is reversible.		
Working time ²	at 20 °C: 1. Minimum drying time (airing time): 3-5 minutes 2. Contact adhesion time (open time): 15-20 minutes 3. Setting time: 36 hours		
	The airing and open time depends on the quantity as well as indoor climate conditions.		

Property	Value / Assessment	Standard / Test method
Yield	<p>Yield of the adhesive applied to both surfaces:</p> <p>ArmaFlex tubes (thickness > consumption butt joint > consumption butt joint + longitudinal joint):</p> <p>10 mm > 1120 m/l > 140 m/l</p> <p>20 mm > 280 m/l > 70 m/l</p> <p>30 mm > 175 m/l > 45 m/l</p> <p>40 mm > 130 m/l > 35 m/l</p> <p>ArmaFlex sheets: 3-4 m² /l</p> <p>These figures are a guide only.</p>	

¹For temperatures below -50 °C please contact our Customer Service Center to request for the corresponding technical information.

²The full adhesion of the adhesive is achieved after 168 h.

All data and technical information are based on results achieved under the specific conditions defined according to the testing standards referenced. Despite taking every precaution to ensure that said data and technical information are up to date, Armacell does not make any representation or warranty, express or implied, as to the accuracy, content or completeness of said data and technical information. Armacell also does not assume any liability towards any person resulting from the use of said data or technical information. Armacell reserves the right to revoke, modify or amend this document at any moment. It is the customer's responsibility to verify if the product is suitable for the intended application. The responsibility for professional and correct installation and compliance with relevant building regulations lies with the customer. This document does not constitute nor is part of a legal offer to sell or to contract.

At Armacell, your trust means everything to us, so we want to let you know your rights and make it easier for you to understand what information we collect and why we collect it. If you would like to find out about our processing of your data, please visit our Data Protection Policy.

Trademarks followed by © or ™ are trademarks of the Armacell Group. © Armacell, 2024. All rights reserved.

Adhesive and cleaner | ArmaFlex Ultima 700 Adhesive | TDS | 012025 | en-GB

ABOUT ARMACELL

As the inventor of flexible foam for equipment insulation and a leading provider of engineered foams, Armacell develops innovative and safe thermal and mechanical solutions that create sustainable value for its customers. Armacell's products significantly contribute to global energy efficiency making a difference around the world every day. With more than 3,300 employees and 25 production plants in 19 countries, the company operates two main businesses, Advanced Insulation and Engineered Foams. Armacell focuses on insulation materials for technical equipment, high-performance foams for acoustic and lightweight applications, recycled PET products, next-generation aerogel technology and passive fire protection systems.



For more information, please visit:
www.armacell.com